



The new Strata ERCM is a modular-style emergency refuge chamber. It consists of sections that can be assembled either before or after delivery. The modular design offers several advantages, including lower cost of ownership, greater sizing flexibility, easier transport and handling, and shorter delivery lead times.

## Strata **Emergency Refuge Chamber Modular** (ERC)

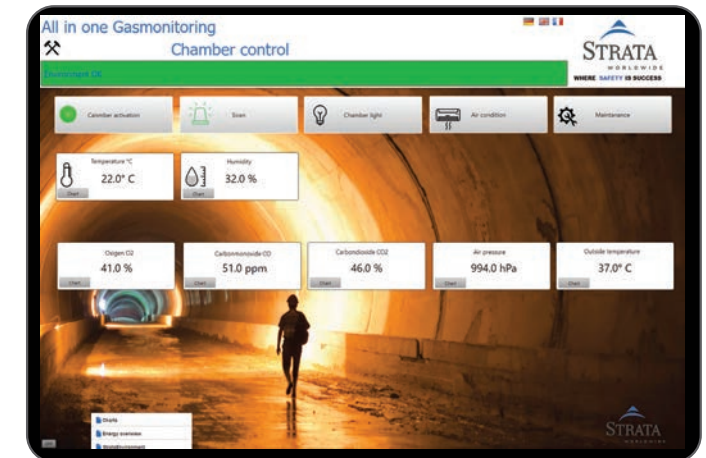
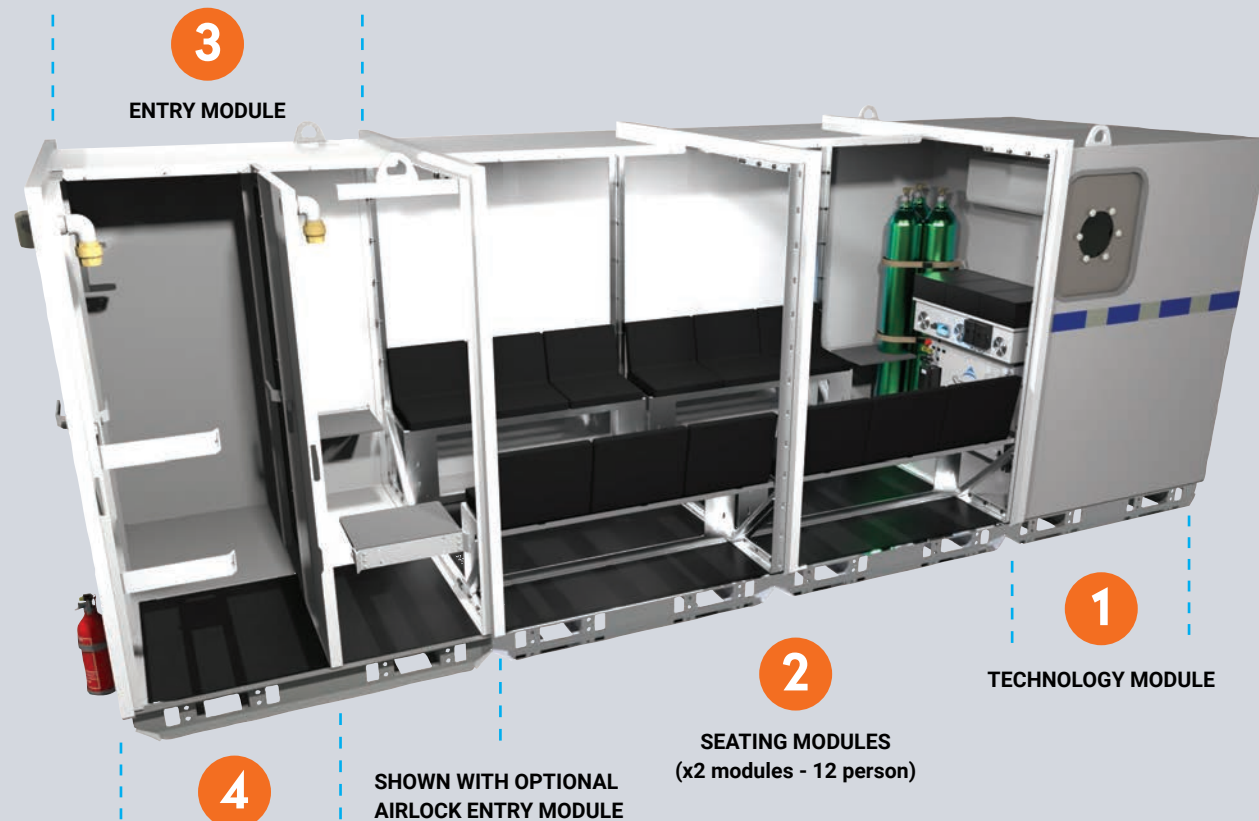
A Cost-Effective Modular Chamber that Offers Increased Flexibility





## Strata Emergency Refuge Chamber Modular (ERCM)

A Cost-Effective Modular Chamber that Offers Increased Flexibility



### HUMAN MACHINE INTERFACE (HMI)

The HMI is a computerized management system located inside the chamber that provides full insight and feedback on the chamber's operating status. It can be used to monitor and control the chamber using a touchscreen display.

- Chamber on/off controls for lights, siren, breathing air system, air conditioning system, power and battery voltages.
- Real-time local and remote atmospheric monitoring and gas level readings
- Video instruction manual
- Maintenance monitoring and alerts
- Communication system for connection to the surface

### FEATURES

- Flexible sizing ranging from 12 to 36 person
- Onboard breathing air and power supplies ranging from 12 – 72 hours
- Connection facilities for main air and power sources
- Equipped with Strata ActiveAIR® breathing air system and cylinders
- Optional built-in gas detection sensors
- Optional air conditioning and dehumidifying system
- Optional airlock entry with or without purge air
- Optional wheel and hitch package
- LED lighting, location siren, and highly visible reflective signage
- Extended life food and water
- Padded seats
- Private lavatory

### ERCM MODULAR SECTIONS

- 1. Technology Module** – The rear section which contains essential systems and components including the Strata ActiveAIR® breathing air system, batteries, power station, air conditioner, air cylinders, and the optional computerized Strata Human Machine Interface (HMI). The HMI is a cutting-edge touch-screen user interface for real-time monitoring and control of chamber components, systems, sensors, and communications.
- 2. Seating Module** – Middle section with seating for six (6) people. Seating modules can be added or removed to adjust capacity, either at the time of ordering or at a later date.
- 3. Entry Module** – The front section which includes the entry door, emergency lighting, siren, and fire extinguisher. The standard entry module leads directly into the main chamber compartment and includes seating for six (6) people.
- 4. Airlock Entry Module** – The Airlock Entry is used instead of the standard Entry Module in situations where a safety airlock is needed. This airlock consists of the main entry door and a secondary interior door that leads into the main chamber. Its purpose is to reduce air contamination entering the main chamber, and an optional purge air system can be used to flush the airlock before the secondary door is opened.

### BENEFITS OF MODULAR DESIGN

- **Greater Flexibility** – Size and capacity of the chambers can be modified at a later date as the needs of the project, site and workforce change.
- **Optimized Handling** – Chambers delivered in sections help to overcome handling and shaft restrictions. The chamber is fully assembled underground.
- **Faster Production** – Standardized sections enable units to be produced more quickly and easily
- **Faster Delivery** - Standardized sections are easier to inventory, which reduces lead times and allows for faster deliveries.
- **Manufacturing Economies** – More cost-effective manufacturing leads to a highly competitive price while maintaining Strata's quality.

## Strata **Emergency Refuge Chamber Modular** (ERCM)

A Cost-Effective Modular Chamber that Offers Increased Flexibility



### AMERICAS

8800 Roswell Road, Suite 145  
Sandy Springs, GA 30350 USA  
TF: 800-691-6601  
T: 770-321-2500  
F: 770-321-2520  
[info@strataworldwide.com](mailto:info@strataworldwide.com)

### AUSTRALIA

Newcastle, NSW  
Unit 3 / 52 Riverside Drive  
Mayfield West, NSW 2304  
Tel: +61 1300 054 469  
[info.au@strataworldwide.com](mailto:info.au@strataworldwide.com)

### EUROPE

Ursulinenstr 35,  
66111 Saarbrücken Germany  
T: +49 (0) 681 41095066  
T: +49 (0) 1 52 52075776  
[info@strataeurope.com](mailto:info@strataeurope.com)

[www.strataworldwide.com/mining](http://www.strataworldwide.com/mining)