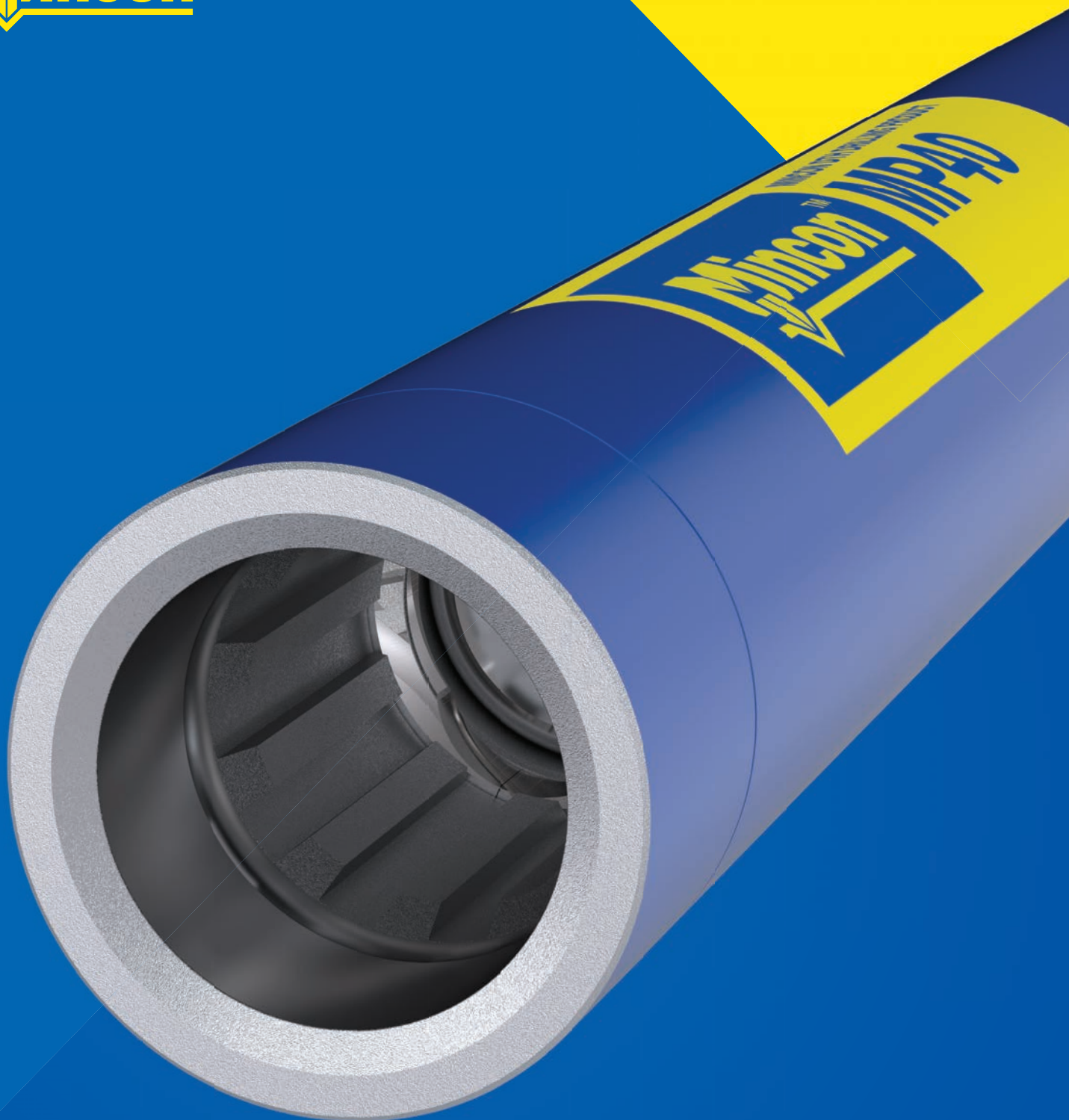




www.mincon.com



The Driller's Choice

DTH HAMMERS 2023



CONTENTS

| | |
|-----------------------------------|----------|
| Mincon Company Information | 2 |
|-----------------------------------|----------|

| | |
|--|----------|
| DTH Hammers and Bits for all Applications | 4 |
|--|----------|

| | |
|-----------------------|----|
| DTH Hammers | |
| 3 inch hammers | 5 |
| 4 inch hammers | 6 |
| 5 inch hammers | 7 |
| 6 to 7 inch hammers | 8 |
| 8 to 9 inch hammers | 9 |
| 10 to 15 inch hammers | 10 |
| 18 to 24 inch hammers | 11 |
| 34 to 40 inch hammers | 12 |

| | |
|-----------------------------|-----------|
| The Complete Package | 13 |
|-----------------------------|-----------|





MINCON, EST. 1977

Mincon has earned its reputation as The Driller's Choice thanks to nearly five decades of developing world-class rock drilling solutions for a wide range of applications.



EXPERTS ON SITE

Our rock-drilling expertise doesn't stop at manufacturing. Around the world, our highly qualified teams work closely with customers to tailor their requirements to available drilling platforms and ground conditions, while also accounting for application-specific requirements. Importantly, feedback from every drill site is provided to our design engineers, informing the cycle of continuous improvement.



SOLUTIONS FOR EVERY APPLICATION

Our products can be found on drill sites around the world, in the blasthole, exploration, geotechnical, water-well, and geothermal industries. At each of those projects, drillers have insisted on using Mincon tools for their superior reliability, durability, performance, and efficiency.



ENGINEERED EFFICIENCY

For us, efficiency means drilling faster while using less fuel and maintaining productivity throughout the useful life of a product. We want our customers to get the best performance out of their drilling solution. We achieve this with our own, proven designs; precise manufacturing; and proprietary heat-treat processes, all of which result in components that have tight tolerances, as well as tailored surface and material properties that ensure longer life.



EUROPE AND MIDDLE EAST REGION

All European Countries
Middle East Countries

AMERICAS REGION

North and South America

AFRICA REGION

African Continent

ASIA PACIFIC

Australia, New Zealand,
Pacific Islands

POINTS OF PRESENCE

With nine global factories, a growing network of Mincon customer service centres, and more than 200 distributors, we have the international presence that our customers need. We manufacture within region to meet local customer demand, while providing service and support to ensure customers achieve optimum productivity from their assets.

COMPREHENSIVE PRODUCT RANGE

Our ambition is always to offer customers a comprehensive range of drilling tools that will drill faster and last longer. Individually, Mincon products offer incremental savings. Together, a complete Mincon drill string will deliver tangible savings through higher penetration rates, unparalleled durability, rock-solid reliability, and reduced strain on ancillary components.



DTH HAMMERS AND BITS FOR ALL APPLICATIONS

Mincon DTH hammers deliver an uncompromised combination of performance, efficiency, and reliability. Ranging from 3"– 40", our DTH hammers have a proven penetration rate that delivers more meters per hour for a lower total drilling cost in quarrying, exploration, water well, geothermal, and construction/geotechnical projects.

Today's Mincon DTH hammers incorporate evolutions in design, material, and controls, based on customer feedback and drilling performance across a wide range of rock formations worldwide. Having gained expertise in a wide variety of rock drilling conditions, our engineers enhanced features in every model in the DTH hammer line-up to use less energy per meter drilled.

Our culture of continuous improvement ensures that we are always engineering for superior results in each field operation, with onsite performance audits, while leading globally by delivering class-leading products.

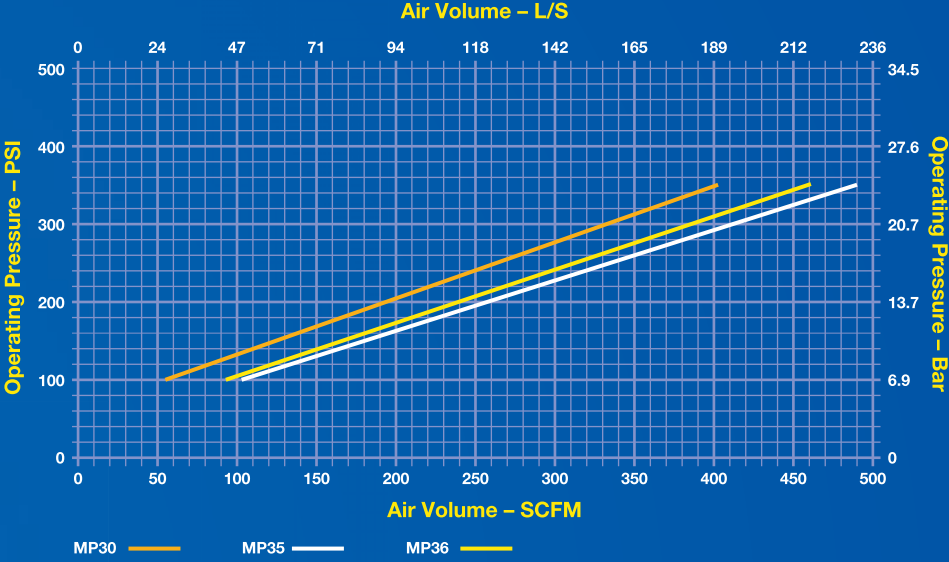
Every Mincon DTH hammer is manufactured in our factories, adhering to strict ISO and global specifications. All components are precision manufactured using high-quality raw materials and undergo proprietary heat-treatment processes at our facilities to guarantee durability and quality.

Mincon's DTH hammer models support a wide variety of popular drill bit shank designs and are available with all standard back head connections. API Reg pin connectors are standard, with alternative connection methods available on customer request.

Mincon's pioneering DTH hammer designs also address issues of airflow to optimise cuttings evacuation, ease of drawback, disassembly, safety, and maintenance costs. Our next-generation DTH hammers, including the renowned MP Series, assure class-leading penetration rates for low total drilling costs.



3-INCH HAMMERS

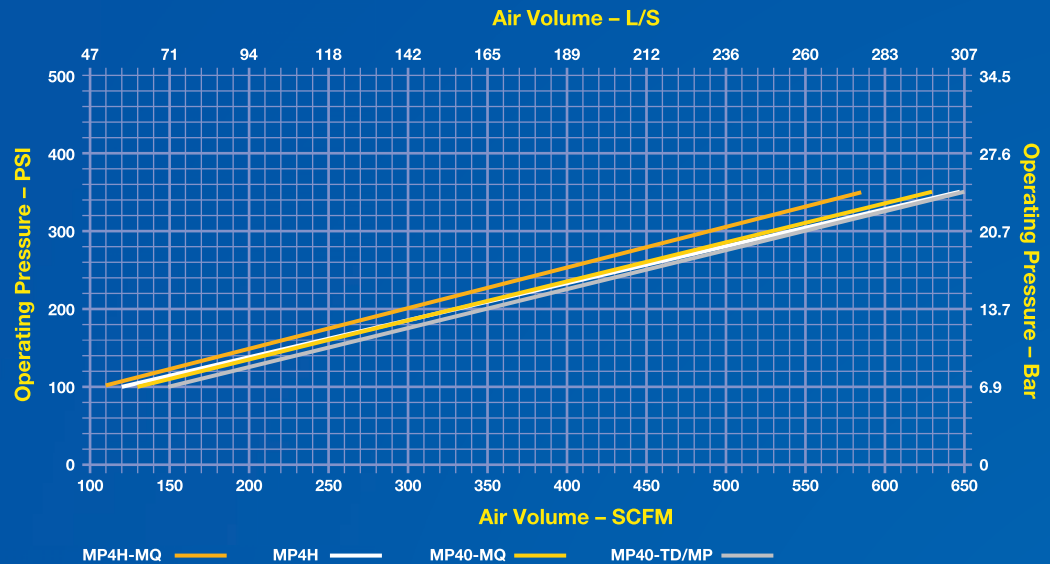


Disclaimer:

1. Air consumption values are based on a combination of simulation data and real-world testing.
2. All air charts are based on normal temperature and atmospheric pressure: 20°C and 101.325 kPa (68°F and 14.696 psi).
3. Air density decreases with altitude, which will increase air consumption. Please consult the Mincon technical implementation team for exact air package requirements that take account for altitude and ground conditions.

| Hammer name | Shank support | Foot valve | Standard backhead thread / type | Hammer OD | Hammer length (shoulder to shoulder) | Minimum bit size | Maximum bit size | Hammer weight | Piston weight |
|-------------|---------------|------------|---------------------------------|--------------|--------------------------------------|------------------|------------------|--------------------|-------------------|
| MP30-DH | DHD3.5 | Yes | 2 3/8" API | 77 mm (3.1") | 858 mm (33.8") | 85 mm (3.4") | 105 mm (4.2") | 22.3 kg (49.2 lbs) | 4.1 kg (9.1 lbs) |
| MP35-DH | DHD3.5 | Yes | 2 3/8" API | 85 mm (3.4") | 805 mm (31.7") | 95 mm (3.8") | 105 mm (4.2") | 24.5 kg (54.1 lbs) | 3.9 kg (8.6 lbs) |
| MP35-MD | MD3.5 | Yes | 2 3/8" API | 85 mm (3.4") | 805 mm (31.7") | 95 mm (3.8") | 105 mm (4.2") | 24.5 kg (54.1 lbs) | 3.9 kg (8.6 lbs) |
| MP36-MD | MD3.5 | Yes | 2 3/8" API | 85 mm (3.4") | 805 mm (31.7") | 95 mm (3.8") | 105 mm (4.2") | 25 kg (55.2 lbs) | 4.6 kg (10.2 lbs) |

4-INCH HAMMERS

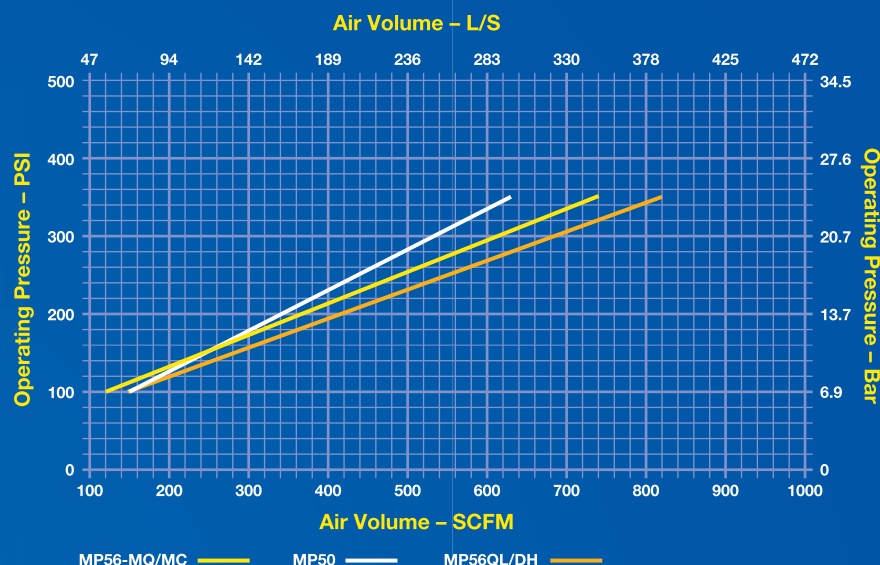


Disclaimer:

1. Air consumption values are based on a combination of simulation data and real-world testing.
2. All air charts are based on normal temperature and atmospheric pressure: 20°C and 101.325 kPa (68°F and 14.696 psi).
3. Air density decreases with altitude, which will increase air consumption. Please consult the Mincon technical implementation team for exact air package requirements that take account for altitude and ground conditions.

| Hammer name | Shank support | Foot valve | Standard backhead thread / type | Hammer OD | Hammer length (shoulder to shoulder) | Minimum bit size | Maximum bit size | Hammer weight | Piston weight |
|-------------|---------------|------------|---------------------------------|---------------|--------------------------------------|------------------|------------------|--------------------|-------------------|
| MP4H-TD | TD40 | Yes | 2 3/8" API | 98 mm (3.9") | 955.3 mm (37.7") | 110 mm (4.4") | 130 mm (5.2") | 38.5 kg (84.9 lbs) | 7.3 kg (16.1 lbs) |
| MP4H-DH | DHD340 | Yes | 2 3/8" API | 98 mm (3.9") | 955.3 mm (37.7") | 110 mm (4.4") | 130 mm (5.2") | 38.5 kg (84.9 lbs) | 7.3 kg (16.1 lbs) |
| MP4H-MD | MD4 | Yes | 2 3/8" API | 98 mm (3.9") | 955.3 mm (37.7") | 110 mm (4.4") | 130 mm (5.2") | 38.5 kg (84.9 lbs) | 7.3 kg (16.1 lbs) |
| MP4H-MQ | MQ40 | No | 2 3/8" API | 98 mm (3.9") | 1,021 mm (40.2") | 110 mm (4.4") | 130 mm (5.2") | 40.1 kg (88.5 lbs) | 7.9 kg (17.5 lbs) |
| MP4H-HD | TD40 | Yes | 2 3/8" API | 101.5 mm (4") | 955.3 mm (37.7") | 110 mm (4.4") | 130 mm (5.2") | 42.5 kg (93.7 lbs) | 7.3 kg (16.1 lbs) |
| MP40-TD | TD40 | Yes | 2 3/8" API | 101.5 mm (4") | 981 mm (38.7") | 110 mm (4.4") | 130 mm (5.2") | 41 kg (90.4 lbs) | 8.3 kg (18.3 lbs) |
| MP40-MP | MP40 | Yes | 2 3/8" API | 101.5 mm (4") | 981 mm (38.7") | 110 mm (4.4") | 130 mm (5.2") | 41 kg (90.4 lbs) | 8.3 kg (18.3 lbs) |
| MP40-MQ | MQ40 | No | 2 3/8" API | 101.5 mm (4") | 981 mm (38.7") | 110 mm (4.4") | 130 mm (5.2") | 43.5 kg (96 lbs) | 8.3 kg (18.3 lbs) |

5-INCH HAMMERS

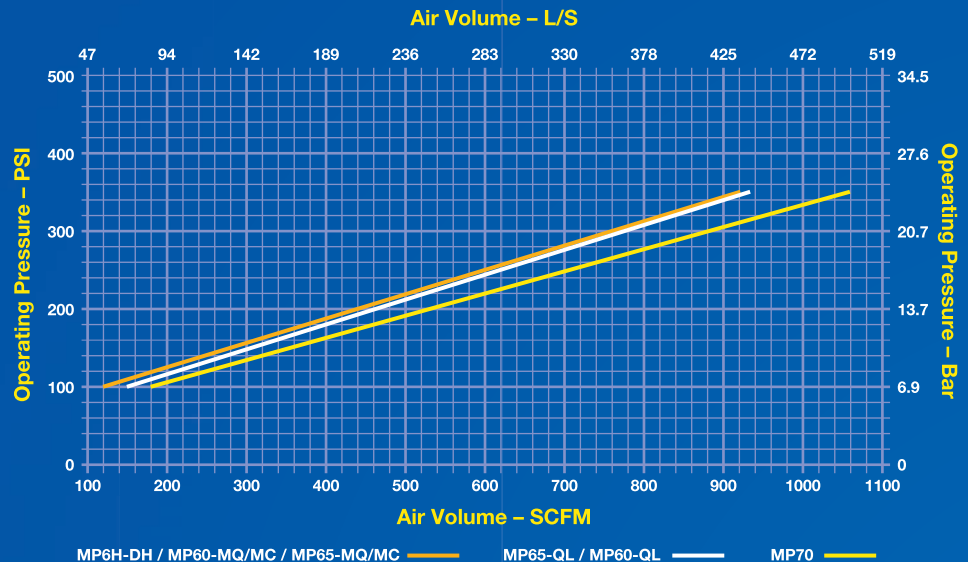


Disclaimer:

1. Air consumption values are based on a combination of simulation data and real-world testing.
2. All air charts are based on normal temperature and atmospheric pressure: 20°C and 101.325 kPa (68°F and 14.696 psi).
3. Air density decreases with altitude, which will increase air consumption. Please consult the Mincon technical implementation team for exact air package requirements that take account for altitude and ground conditions.

| Hammer name | Shank support | Foot valve | Standard backhead thread / type | Hammer OD | Hammer length (shoulder to shoulder) | Minimum bit size | Maximum bit size | Hammer weight | Piston weight |
|-------------|---------------|------------|---------------------------------|---------------|--------------------------------------|------------------|------------------|---------------------|--------------------|
| MP50-QL | QL50 | Yes | 3 1/2" API | 115 mm (4.6") | 993.7 mm (39.2") | 127 mm (5") | 152 mm (6") | 55.4 kg (122.2 lbs) | 12.5 kg (27.6 lbs) |
| MP56-QL | QL50 | Yes | 3 1/2" API | 124 mm (4.9") | 1,019 mm (40.1") | 140 mm (5.6") | 152 mm (6") | 67 kg (147.8 lbs) | 15.3 kg (33.8 lbs) |
| MP56-MQ | MQ50 | No | 3 1/2" API | 124 mm (4.9") | 1,019 mm (40.1") | 140 mm (5.6") | 152 mm (6") | 69 kg (152.2 lbs) | 14.9 kg (32.9 lbs) |
| MP56-DH | DHD350/IR350 | Yes | 3 1/2" API | 124 mm (4.9") | 1,039.5 mm (41") | 140 mm (5.6") | 152 mm (6") | 67 kg (147.8 lbs) | 15.3 kg (33.8 lbs) |
| MP56-MC | MC51 | No | 3 1/2" API | 124 mm (4.9") | 957.5 mm (37.7") | 140 mm (5.6") | 152 mm (6") | 66.3 kg (146.2 lbs) | 14.9 kg (32.9 lbs) |

6 – 7-INCH HAMMERS

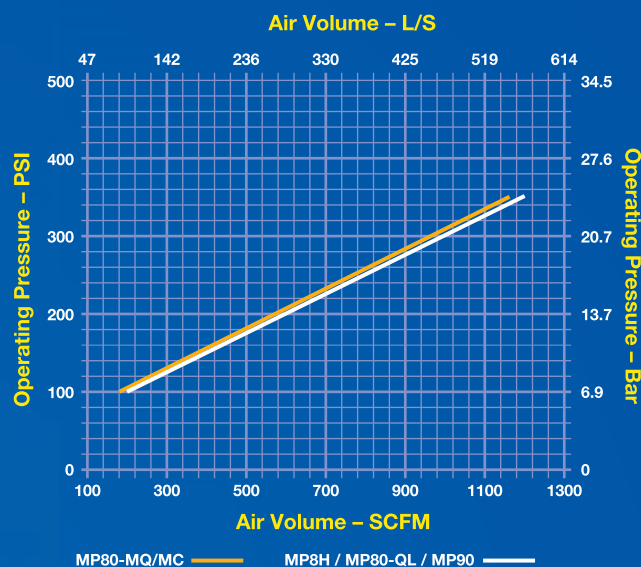


Disclaimer:

1. Air consumption values are based on a combination of simulation data and real-world testing.
2. All air charts are based on normal temperature and atmospheric pressure: 20°C and 101.325 kPa (68°F and 14.696 psi).
3. Air density decreases with altitude, which will increase air consumption. Please consult the Mincon technical implementation team for exact air package requirements that take account for altitude and ground conditions.

| Hammer name | Shank support | Foot valve | Standard backhead thread / type | Hammer OD | Hammer length (shoulder to shoulder) | Minimum bit size | Maximum bit size | Hammer weight | Piston weight |
|-------------|---------------|------------|---------------------------------|---------------|--------------------------------------|------------------|------------------|---------------------|--------------------|
| MP6H-DH | DHD360 | Yes | 3 1/2" API | 140 mm (5.6") | 1,134 mm (44.7") | 152 mm (6") | 203 mm (8") | 95.3 kg (210.2 lbs) | 20 kg (44.1 lbs) |
| MP60-QL | QL60 | Yes | 3 1/2" API | 141 mm (5.6") | 1,002 mm (39.5") | 152 mm (6") | 203 mm (8") | 83.7 kg (184.6 lbs) | 21.6 kg (47.7 lbs) |
| MP60-MQ | MQ60 | No | 3 1/2" API | 141 mm (5.6") | 1,002 mm (39.5") | 152 mm (6") | 203 mm (8") | 85 kg (187.4 lbs) | 19.3 kg (42.6 lbs) |
| MP60-MC | MC61 | No | 3 1/2" API | 141 mm (5.6") | 1,002 mm (39.5") | 152 mm (6") | 203 mm (8") | 89 kg (196.3 lbs) | 23 kg (50.8 lbs) |
| MP65-QL | QL60 | Yes | 3 1/2" API | 146 mm (5.8") | 1,002 mm (39.5") | 159 mm (6.3") | 203 mm (8") | 93 kg (205.1 lbs) | 21.6 kg (47.7 lbs) |
| MP65-MQ | MQ60 | No | 3 1/2" API | 146 mm (5.8") | 1,002 mm (39.5") | 159 mm (6.3") | 203 mm (8") | 93 kg (205.1 lbs) | 19.3 kg (42.6 lbs) |
| MP65-MC | MC61 | No | 3 1/2" API | 146 mm (5.8") | 1,002 mm (39.5") | 159 mm (6.3") | 203 mm (8") | 96.4 kg (212.6 lbs) | 23 kg (50.8 lbs) |
| MP70-MC | MC71 | No | 4 1/2" API | 173 mm (6.9") | 1,114 mm (43.9") | 191 mm (7.6") | 228 mm (9") | 156.9 kg (346 lbs) | 30.3 kg (66.8 lbs) |

8 – 9-INCH HAMMERS

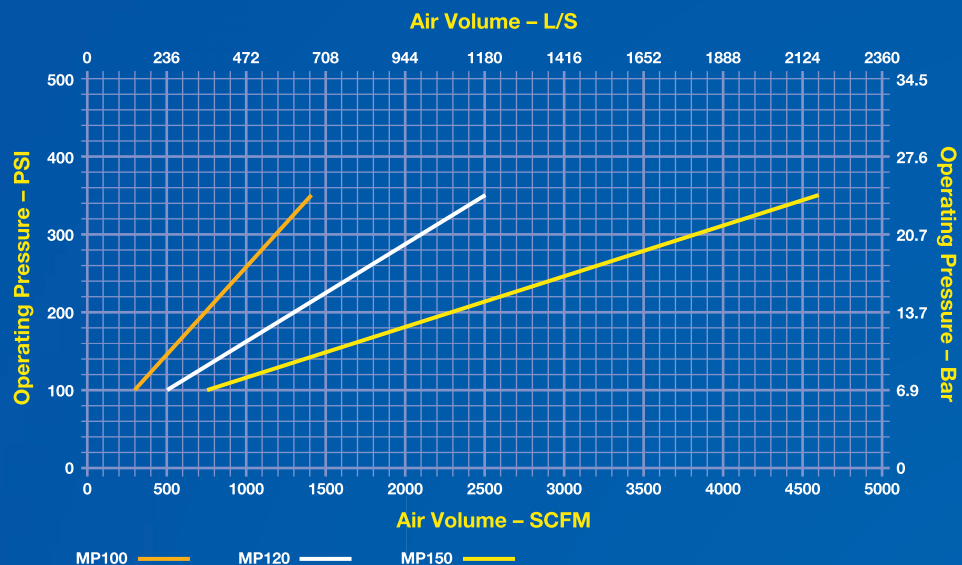


Disclaimer:

1. Air consumption values are based on a combination of simulation data and real-world testing.
2. All air charts are based on normal temperature and atmospheric pressure: 20°C and 101.325 kPa (68°F and 14.696 psi).
3. Air density decreases with altitude, which will increase air consumption. Please consult the Mincon technical implementation team for exact air package requirements that take account for altitude and ground conditions.

| Hammer name | Shank support | Foot valve | Standard backhead thread / type | Hammer OD | Hammer length (shoulder to shoulder) | Minimum bit size | Maximum bit size | Hammer weight | Piston weight |
|-------------|---------------|------------|---------------------------------|-----------------|--------------------------------------|------------------|------------------|----------------------|---------------------|
| MP8H-DH | DHD380 | Yes | 4 1/2" API | 181.5 mm (7.2") | 1,205 mm (47.5") | 203 mm (8") | 254 mm (10") | 176 kg (388.1 lbs) | 39 kg (86 lbs) |
| MP80-QL | QL80 | Yes | 4 1/2" API | 181.5 mm (7.2") | 1,186 mm (46.7") | 203 mm (8") | 254 mm (10") | 173.2 kg (381.9 lbs) | 39 kg (86 lbs) |
| MP80-MC | MC81 | No | 4 1/2" API | 181.5 mm (7.2") | 1,196 mm (47.1") | 203 mm (8") | 254 mm (10") | 184 kg (405.7 lbs) | 46.3 kg (102.1 lbs) |
| MP80-MQ | MQ80 | No | 4 1/2" API | 181.5 mm (7.2") | 1,306 mm (51.5") | 203 mm (8") | 254 mm (10") | 193 kg (425.5 lbs) | 46.3 kg (102.1 lbs) |
| MP80-HD | MQ80 | Yes | 4 1/2" API | 193.7 mm (7.7") | 1,350 mm (53.2") | 216 mm (8.6") | 254 mm (10") | 240 kg (529.2 lbs) | 46.3 kg (102.1 lbs) |
| MP90-TD | TD90 | Yes | 4 1/2" API | 195 mm (7.7") | 1,355 mm (53.4") | 279 mm (11") | 254 mm (10") | 234 kg (515.9 lbs) | 59.4 kg (131 lbs) |
| MP90-HD | TD90 | Yes | 4 1/2" API | 219 mm (8.7") | 1,355 mm (53.4") | 254 mm (10") | 254 mm (10") | 315 kg (694.5 lbs) | 59.4 kg (131 lbs) |

10 – 15-INCH HAMMERS

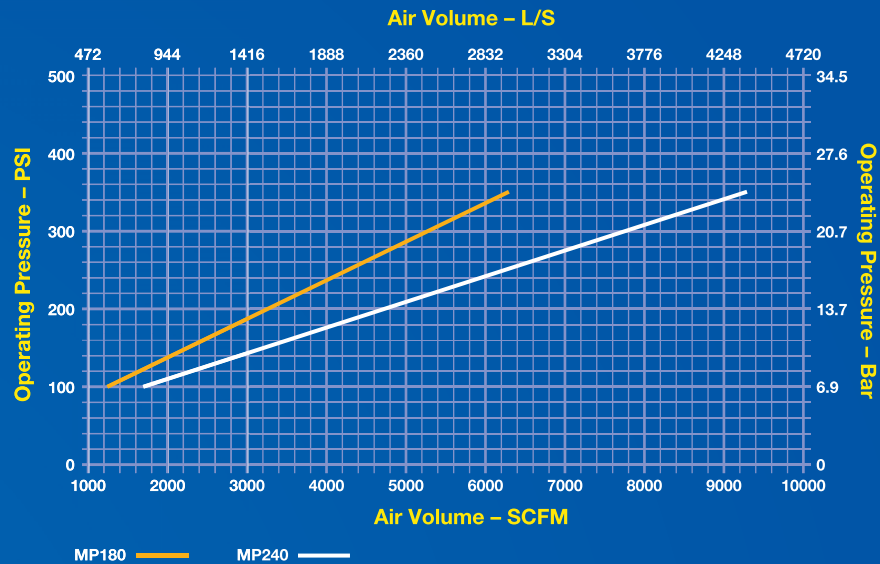


Disclaimer:

1. Air consumption values are based on a combination of simulation data and real-world testing.
2. All air charts are based on normal temperature and atmospheric pressure: 20°C and 101.325 kPa (68°F and 14.696 psi).
3. Air density decreases with altitude, which will increase air consumption. Please consult the Mincon technical implementation team for exact air package requirements that take account for altitude and ground conditions.

| Hammer name | Shank support | Foot valve | Standard backhead thread / type | Hammer OD | Hammer length (shoulder to shoulder) | Minimum bit size | Maximum bit size | Hammer weight | Piston weight |
|-------------|---------------|------------|---------------------------------|----------------|--------------------------------------|------------------|------------------|----------------------|----------------------|
| MP100SD | SD10 | Yes | 6 5/8" API | 219 mm (8.7") | 1,360 mm (53.6") | 254 mm (10") | 305 mm (12.1") | 295 kg (650.4 lbs) | 77.8 kg (171.6 lbs) |
| MP120-QL | QL120 | Yes | 6 5/8" API | 273 mm (10.8") | 1,454 mm (57.3") | 305 mm (12.1") | 381 mm (15") | 457 kg (1,007.6 lbs) | 138.5 kg (305.4 lbs) |
| MP120-N120 | N120 | Yes | 6 5/8" API | 273 mm (10.8") | 1,452 mm (57.2") | 305 mm (12.1") | 381 mm (15") | 460 kg (1,014.2 lbs) | 129.6 kg (285.8 lbs) |
| MP120-SD | SD12 | Yes | 6 5/8" API | 273 mm (10.8") | 1,431 mm (56.4") | 305 mm (12.1") | 381 mm (15") | 460 kg (1,014.2 lbs) | 130.8 kg (288.4 lbs) |
| MP120-N125 | N125 | Yes | 6 5/8" API | 273 mm (10.8") | 1,451 mm (57.1") | 305 mm (12.1") | 381 mm (15") | 455 kg (1,003 lbs) | 137.4 kg (303 lbs) |
| MP150-MC | MC150 | No | 8 5/8" API | 340 mm (13.4") | 1,662 mm (65.5") | 381 mm (15") | 457 mm (18") | 857 kg (1,889.4 lbs) | 206 kg (454.2 lbs) |

18 – 24-INCH HAMMERS



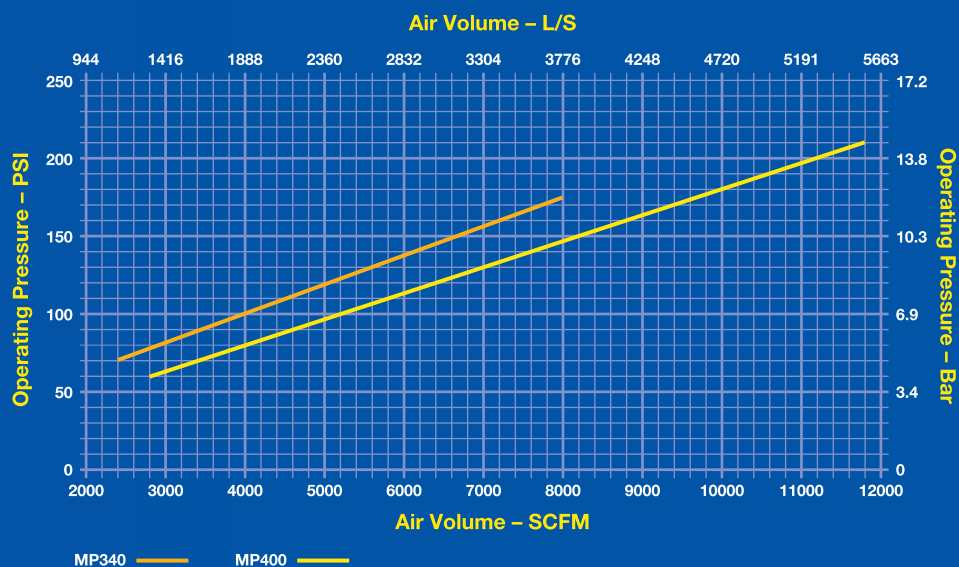
Disclaimer:

1. Air consumption values are based on a combination of simulation data and real-world testing.
2. All air charts are based on normal temperature and atmospheric pressure: 20°C and 101.325 kPa (68°F and 14.696 psi).
3. Air density decreases with altitude, which will increase air consumption. Please consult the Mincon technical implementation team for exact air package requirements that take account for altitude and ground conditions.

| Hammer name | Shank support | Foot valve | Standard backhead thread / type | Hammer OD | Hammer length (shoulder to shoulder) | Minimum bit size | Maximum bit size | Hammer weight | Piston weight |
|-------------|---------------|------------|---------------------------------|----------------|--------------------------------------|------------------|------------------|----------------------|----------------------|
| MP180-QL | QL200 | Yes | 8 5/8" API | 400 mm (15.8") | 1,659mm (65.3") | 457 mm (18") | 610 mm (24.1") | 1,177 kg (2,595 lbs) | 284 kg (626.2 lbs) |
| MP180-N180 | N180 | Yes | 8 5/8" API | 400 mm (15.8") | 1695 mm (66.7") | 457 mm (18") | 610 mm (24.1") | 1,164 kg (2,566 lbs) | 282 kg (621.8 lbs) |
| MP180-MQ | MQ180 | No | 8 5/8" API | 400 mm (15.8") | 1,781 mm (70.1") | 457 mm (18") | 610 mm (24.1") | 1,241 kg (2,736 lbs) | 287 kg (632.8 lbs) |
| MP240-N240 | N240 | Yes | HEX 275 | 525 mm (20.7") | 1,925 mm (75.8") | 610 mm (24.1") | 864 mm (34.1") | 2,455 kg (5,412 lbs) | 550 kg (1,212.6 lbs) |
| MP240-MQ | MQ240 | No | HEX 275 | 525 mm (20.7") | 2,077mm (81.8") | 610 mm (24.1") | 864 mm (34.1") | 2,541kg (5,602 lbs) | 544 kg (1,199.4 lbs) |

* MP180 and MP240 with API Reg Pin backhead shown for illustrative purposes only. Actual product will differ.

34 – 40-INCH HAMMERS



Disclaimer:

1. Air consumption values are based on a combination of simulation data and real-world testing.
2. All air charts are based on normal temperature and atmospheric pressure: 20°C and 101.325 kPa (68°F and 14.696 psi).
3. Air density decreases with altitude, which will increase air consumption. Please consult the Mincon technical implementation team for exact air package requirements that take account for altitude and ground conditions.

| Hammer name | Shank support | Foot valve | Standard backhead thread / type | Hammer OD | Hammer length (shoulder to shoulder) | Minimum bit size | Maximum bit size | Hammer weight | Piston weight |
|-------------|---------------|------------|---------------------------------|----------------|--------------------------------------|------------------|------------------|-------------------------|------------------------|
| MP340 | MF34 | No | HEX 370 | 750 mm (29.6") | 2,336 mm (92") | 850 mm (33.5") | 1,220 mm (48.1") | 5,807 kg (12,802.3 lbs) | 1,050 kg (2,314.9 lbs) |
| MP400 | MF34 | No | HEX 370 | 750 mm (29.6") | 2,336 mm (92") | 1,000 mm (39.4") | 1,524 mm (60") | 6,048 kg (13,333.6 lbs) | 1,500 kg (3,307 lbs) |

THE COMPLETE PACKAGE

Mincon aims to offer comprehensive product range, allowing drillers to tailor a complete Mincon drilling solution for their application and drilling platform.

Our range includes DTH hammers, DTH drill bits, rotary drill bits, geotechnical and foundation drilling systems, reverse circulation systems for exploration drilling, horizontal directional drilling systems, and drill pipes. Each of these offerings has been designed in-house by Mincon and is manufactured at our state-of-the-art factories around the world.

In addition to our class-leading tools and solutions, we offer customers ancillary equipment for the operation and maintenance of their drill string. This equipment can be installed at customer sites or accessed through Mincon service centres.

We also offer a range of drilling fluids, including Mincon Envirosafe rock drilling oil which ensures the correct lubrication to prolong the service life of DTH hammers. The range includes Envirosafe Foamer and Hole Control, designed to stabilise boreholes in specific ground conditions.

Additional information on the complete Mincon product range can be obtained from your Mincon service centre, distributor, or by visiting www.mincon.com.



MINCON GROUP PLC

Smithstown Industrial Estate,
Shannon, Co. Clare, Ireland.

E. sales@mincon.com

W. mincon.com